

Easy to use, intuitive and portable design.

#1 DISINFECTANT WIPE IN HEALTHCARE



Softpack contains 80% less plastic and reduces overall waste footprint².

EPA Reg. No. 9480-4

- + Short 2 minute contact time is effective against enveloped/ non-enveloped viruses, bacteria, TB, fungi, multi-drug resistant bacteria and bloodborne pathogens³.
- + Effective against SARS-CoV-2 (Coronavirus), the virus that causes COVID-19; on EPA List N, Disinfectants for Coronavirus (COVID-19)⁴.
- + Effective against *Candida auris*; on EPA List P, Antimicrobial Products Registered with EPA for Claims Against *Candida auris*⁴.
- + Compatible with over 800+ devices and surfaces⁴.
- + Bactericidal, Tuberculocidal, Virucidal, Fungicidal.
- + Intermediate level disinfectant.



Softpack format:

35-57% more storage and space efficient than a case of canisters*

Super Sani-Cloth
GERMICIDAL DISPOSABLE WIPE

+PDI
BE THE DIFFERENCE

The same trusted Super **Sani-Cloth®** wipes, that meet CDC, OSHA and infection control guidelines, now in a new softpack.

Easy to use, intuitive and portable design provides greater flexibility

New package format contains 80% less plastic and reduces overall waste footprint²

Color coded for staff identification

35-57% more storage and space efficient than a case of canisters*



Large compliance icons

Actual size of softpack:

4.4" H
8.9" W
3.1" D

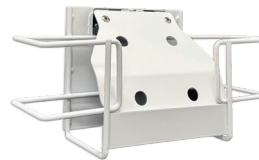
Point of care accessories.



Sani-Bracket®
for wall/pole mounting of a
Sani-Cloth® Canister



Sani-Canister Caddy®
for placement on flat surfaces
(Bilingual)



Softpack Wall Bracket
allows for convenient access



Educational Wall Charts and Signage
(Bilingual)

	REORDER NO.	WIPE SIZE	CASE PACK	CASE WGT	CASE CUBE	PALLET TI/HI
Super Sani-Cloth® Germicidal Disposable Wipe						
Softpack	A22480	8.2" X 9.8"	80/pack, 9 packs/case	15.4 lbs	0.948 ft	10/4
Large Canister	Q55172	6" X 6.75"	160/can, 12 cans/case	25.63 lbs	1.430 ft	10/3
Extra Large Canister	P86984	7.5" X 15"	75/can, 6 cans/case	16.71 lbs	0.936 ft	10/4
Large Individual Packets	H04082	5" X 8"	50/box, 10 boxes/case	7.72 lbs	0.539 ft	20/4
Extra Large Packets	U87295	11.5" X 11.75"	50/box, 3 boxes/case	7.51 lbs	0.500 ft	24/3

¹Market leadership claims based on Q4 2024 Clarivate Data.

²In comparison to weight of plastic for similar count canister format; data on file.

³See Technical Data Bulletin for a complete list of microorganisms.

⁴On hard, nonporous surfaces.

⁵Refer to device manufacturer's instructions for use.

⁶Kills SARS-CoV-2 (Coronavirus), the virus that causes COVID-19, on hard, nonporous surfaces.

*35% compared to a L case and 57% compared to a XL case.



**LEARN
MORE**