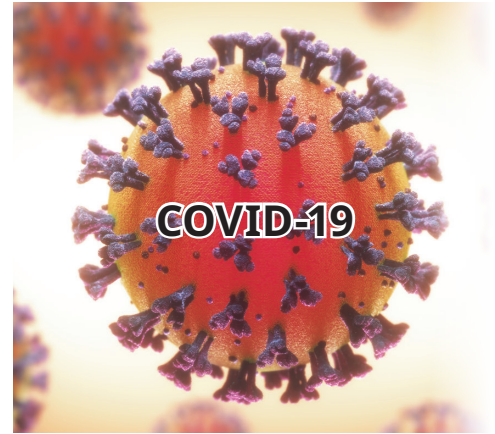
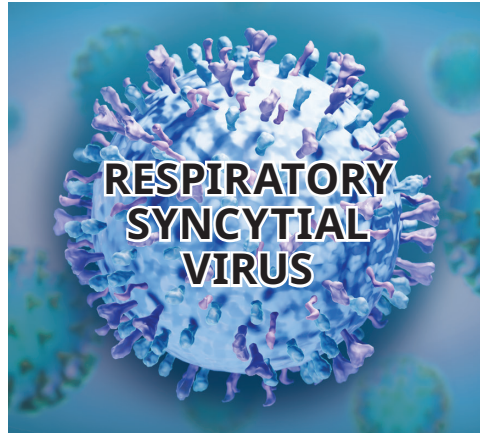
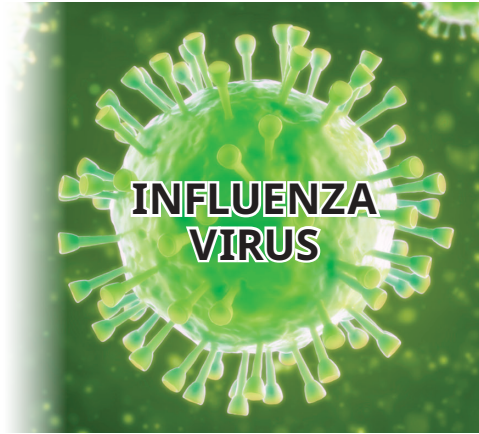


# Do not let your guard down!



As we enter respiratory virus season, it will be important to prepare for influenza virus (flu), respiratory syncytial virus (RSV), and COVID-19. Similar to previous seasons, infection rates and hospitalizations are likely to increase across the United States. Here are some tips to help “break the chain of transmission” for flu, RSV, and COVID-19.

## Breaking the Chain of Transmission

- + Receive your vaccinations and boosters as recommended by your healthcare provider.<sup>1</sup>
- + Isolate suspected or confirmed patients with flu, RSV, or COVID-19 according to the current guidelines; follow respiratory hygiene recommendations when waiting in general waiting rooms.<sup>2</sup>
- + Disinfect high-touch, non-critical environmental surfaces, such as blood pressure cuffs, thermometers, wheelchairs, stethoscopes, tables, and exam tables with an EPA-registered, hospital-grade disinfectant with approved efficacy claims against flu, RSV, and COVID-19.<sup>3,4,5</sup>
- + Practice proper hand hygiene – the most basic element for preventing the transmission of respiratory viruses.
  - Wash hands with soap and water whenever possible.<sup>6</sup>
  - If soap and water are not available, use a hand sanitizer with at least 70% alcohol.<sup>6</sup>
  - Kills 99.99% of many common bacteria found on hands.<sup>6</sup>

## Suggested PDI products to help “break the chain”.

### Hand Hygiene Solutions

**Sani-Hands®** Instant Hand Sanitizing Wipes provide effective hand hygiene for healthcare workers and patients.

- + Physically removes dirt/soil better than an alcohol-based gel or foam.<sup>8</sup>
- + Safe to use before eating and drinking.<sup>9</sup>



**#1**  
HAND  
WIPE IN  
HEALTHCARE<sup>7</sup>

### Environment of Care Solutions

**Sani-Cloth®** Germicidal Disposable Wipes are EPA-registered, hospital-grade disinfectants with approved efficacy claims against influenza, respiratory syncytial virus and SARS-CoV-2 virus. From daily, facility-wide use to outbreak situations, PDI can address all your environment of care needs.

**Easy Screen®** Cleaning Wipe is a compatible 70% IPA touchscreen cleaner ideal for touchscreens, whiteboards, and any equipment requiring 70% IPA as the cleaning formulation.<sup>11</sup>



**#1**  
DISINFECTANT  
WIPE IN  
HEALTHCARE<sup>10</sup>

**PDI PRODUCT DESCRIPTION**

**Sani-Cloth®** Prime Large Canister  
**Sani-Cloth** Prime X-Large Canister  
**Sani-Cloth** Prime Large Individual Packets  
**Sani-Cloth** Prime X-Large Individual Packets  
 Super **Sani-Cloth®** Large Canister  
 Super **Sani-Cloth** X-Large Canister  
 Super **Sani-Cloth** Large Individual Packets  
 Super **Sani-Cloth** X-Large Individual Packets  
 Super **Sani-Cloth** Softpack  
**Sani-Cloth®** AF3 Large Canister  
**Sani-Cloth** AF3 X-Large Canister  
**Sani-Cloth** AF3 Large Individual Packets  
**Sani-Cloth** AF3 X-Large Individual Packets  
**Sani-Cloth** AF3 Pail  
**Sani-Cloth** AF3 Refill  
**Sani-Cloth** AF3 Softpack  
**Sani-Cloth®** Bleach Clinical Size Canister  
**Sani-Cloth** Bleach Large Canister  
**Sani-Cloth** Bleach X-Large Canister  
**Sani-Cloth** Bleach Large Individual Packets  
**Sani-Cloth** Bleach X-Large Individual Packets  
**Sani-Cloth** Bleach Pail  
**Sani-Cloth** Bleach Refill  
**Sani-HyPerCide®** Large Canister  
**Sani-HyPerCide®** X-Large Canister  
**Sani-Cloth®** Plus Large Canister  
**Sani-Cloth** Plus X-Large Canister  
**Easy Screen®** Cleaning Wipe  
**Easy Screen** Packet  
**Sani-Hands®** Medium Canister  
**Sani-Hands** Large Canister  
**Sani-Hands** Bedside Pack  
**Sani-Hands** Individuals

**REORDER NO.**

P25372  
 P24284  
 H06182  
 U13195  
 Q55172  
 P86984  
 H04082  
 U87295  
 A22480  
 P13872  
 P72584  
 H59200  
 U27500  
 P1450P  
 P2450P  
 M8063S80  
 P84172  
 P54072  
 P25784  
 H58195  
 U26595  
 P7007P  
 P700RF  
 P27372  
 P26584  
 Q89072  
 Q85084  
 P03672  
 H01050  
 P13472  
 P15984  
 P71520  
 D43600

**WIPE SIZE**

6" x 6.75"  
 7.5 x 15"  
 5 x 8"  
 11.5 x 11.75"  
 6" x 6.75"  
 7.5" x 15"  
 5" x 8"  
 11.5" x 11.75"  
 8.2" x 9.8"  
 6" x 6.75"  
 7.5" x 15"  
 5" x 8"  
 11.5" x 11.75"  
 7.5" x 15"  
 7.5" x 15"  
 8.2" x 9.8"  
 5" x 6"  
 6" x 10.5"  
 7.5" x 15"  
 5" x 7"  
 11.5" x 11.75"  
 7.5" x 15"  
 7.5" x 15"  
 6" x 6.75"  
 7.5" x 15"  
 6" x 6.75"  
 7.5" x 15"  
 6" x 9"  
 5" x 8"  
 6" x 7.5"  
 6" x 7.5"  
 5.5" x 8.4"  
 5" x 7.875"

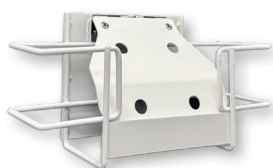
**PACKAGING**

160/can, 12 cans/cs  
 70/can, 6 cans/cs  
 50/box, 10 boxes/cs  
 50/box, 3 boxes/cs  
 160/can, 12 cans/cs  
 75/can, 6 cans/cs  
 50/box, 10 boxes/cs  
 50/box, 3 boxes/cs  
 80/pack, 9 packs/cs  
 160/can, 12 cans/cs  
 75/can, 6 cans/cs  
 50/box, 10 boxes/cs  
 50/box, 3 boxes/cs  
 160/pail, 2 pails/cs  
 160/refill, 2 refills/cs  
 80/pack, 9 packs/cs  
 160/can, 12 cans/cs  
 75/can, 12 cans/cs  
 65/can, 6 cans/cs  
 40/box, 10 boxes/cs  
 40/box, 3 boxes/cs  
 160/pail, 2 pails/cs  
 160/refill, 2 refills/cs  
 160/can, 12 cans/cs  
 65/can, 6 cans/cs  
 160/can, 12 cans/cs  
 65/can, 6 cans/cs  
 70/can, 12 cans/cs  
 50/box, 10 boxes/cs  
 135/can, 12 cans/cs  
 220/can, 6 cans/cs  
 20/pack, 48 packs/cs  
 100/box, 10 boxes/cs

**Point-of-Care Accessories**



**Sani-Bracket®**  
for wall/pole mounting  
of a canister



**Softpack Wall Bracket**  
allows for convenient access



**Sani-Canister Caddy®**  
for placement on flat surfaces  
(bilingual)



**Sani-TAG®** Equipment ID System  
for identification of equipment to  
ensure the proper wipe is used on  
a particular piece of equipment



Educational Wall Charts  
and signage (bilingual)



Contact your local PDI Rep for more info

<sup>1</sup><https://www.cdc.gov/respiratory-viruses/index.html>

<sup>2</sup><https://www.cdc.gov/flu/professionals/infectioncontrol/healthcaresettings.html>

<sup>3</sup><https://www.cdc.gov/flu/professionals/infectioncontrol/healthcaresettings.htm>

<sup>4</sup><https://www.cdc.gov/rsv/about/prevention.html>

<sup>5</sup><https://www.cdc.gov/coronavirus/2019-ncov/hcp/infection-control-recommendations.html>

<sup>6</sup><https://www.cdc.gov/respiratory-viruses/index.html>

<sup>7</sup>Clarivate Data 2024 Q2.

<sup>8</sup>PDI study ER 20/146 V.1 3/2/2021

<sup>9</sup>Jackson, Alexis N. "In vitro Time Kill Studies: Microbac Laboratories Report # 735-477." 30 May 2024.

<sup>10</sup>Clarivate Data 2024 Q2 is for **Sani-Cloth®** products only and does not pertain to the **Easy Screen®** Cleaning Wipe.

<sup>11</sup>Cleaning the screen of your mobile device with a wipe containing alcohol may reduce the lifespan of any anti-fingerprint coating. Please check your device manufacturer's cleaning instructions. Energized electronic equipment only.

