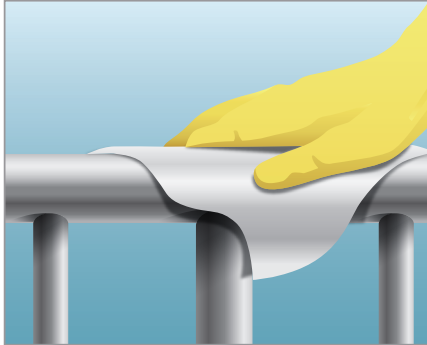
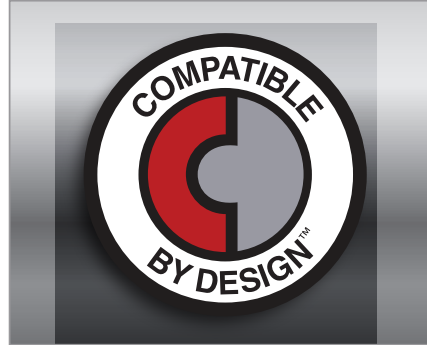


# Work smarter, not harder.

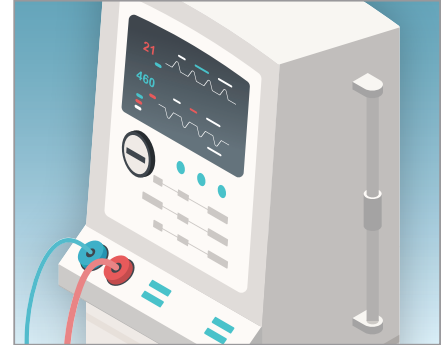
PDI's **Sani-Cloth®** Bleach Wipes can help clean more efficiently, keep surfaces looking new for longer, and help protect your investments better than Clorox Healthcare® Bleach Germicidal Wipes.



**More surface coverage<sup>1</sup>**



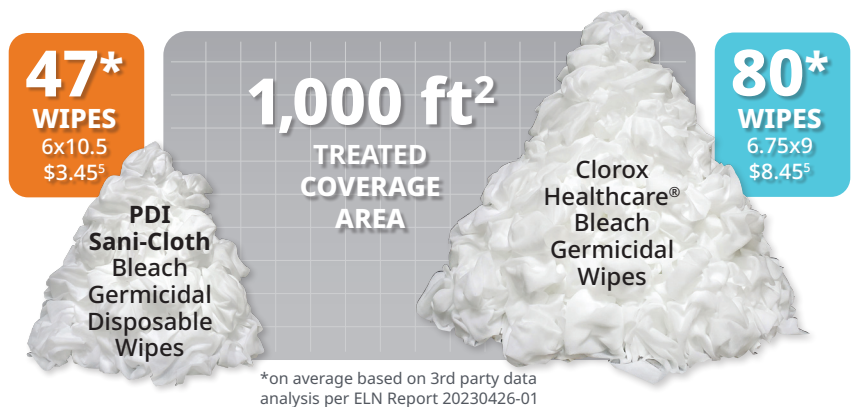
**Less harsh on commonly used materials in Healthcare<sup>2</sup>**



**Included on more medical device IFU's<sup>3</sup>**

## We've got you covered.

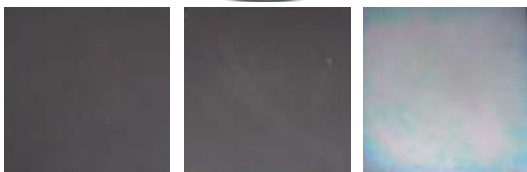
PDI **Sani-Cloth** Bleach wipes cover **66% more surface area<sup>4</sup>** than Clorox Healthcare® Bleach Germicidal Wipes.<sup>1</sup> Using fewer wipes results in cost savings, more efficiency, and less waste.



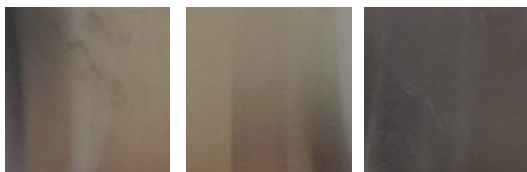
Clorox Healthcare® Bleach Germicidal Wipes

Standard

Brass Alloy (Cy-Chrome® Plated)



Stainless Steel 304



No visible degradation

Resulted in visual degradation during the study.<sup>2</sup>

## Protect your patients and equipment.

PDI **Sani-Cloth** Bleach Wipes performs better than Clorox Healthcare® Bleach Germicidal Wipes on some of the most commonly found surfaces in Healthcare.<sup>2</sup> Degradation of equipment can result in decrease of patient safety and perception of cleanliness.



# Sani-Cloth® Bleach Germicidal Disposable Wipes



For areas contaminated with some of the most difficult microorganisms such as *Clostridioides difficile* spores and Norovirus

- + 4 minute overall contact time
- + Effective against 50 microorganisms<sup>6</sup>
- + Meets CDC and APIC guidelines for surface disinfection of the toughest healthcare pathogens<sup>6</sup>
- + 6300 PPM sodium hypochlorite
- + Compatible with a broad range of surfaces and equipment in healthcare<sup>7</sup>
- + Listed on more than 788 device manufacturer IFUs



Sani-Cloth® Bleach Germicidal Disposable Wipes	RE ORDER NO.	WIPE SIZE	WIPE COUNT	CASE PACK	CASE WGT	CASE CUBE	PALLET TI/HI
<b>Clinical Size Wipes Canister</b>	P84172	6" x 5"	160/can	12 cans/case	26.86 LBS	1.489 ft <sup>2</sup>	10/3
<b>Large Wipes Canister</b>	P54072	6" x 10.5"	75/can	12 cans/case	26.50 LBS	1.540 ft <sup>2</sup>	10/3
<b>Extra-Large Wipes Canister</b>	P25784	7.5" x 15"	65/can	6 cans/case	19.79 LBS	1.012 ft <sup>2</sup>	10/4
<b>Large Wipes Individual Packets</b>	H58195	5" x 7"	40/box	10 boxes/case	8.25 LBS	0.5085 ft <sup>2</sup>	19/5
<b>Extra-Large Wipes Individual Packets</b>	U26595	11.5" x 11.75"	40/box	3 boxes/case	8.20 LBS	0.4998 ft <sup>2</sup>	24/3
<b>Pail</b>	P7007P	7.5" x 15"	160/refill	2 pails/case	16.50 LBS	0.953 ft <sup>2</sup>	10/5
<b>Refill</b>	P700RF	7.5" x 15"	40/box	2 refills/case	15.60 LBS	0.529 ft <sup>2</sup>	18/3

1. Data on file. Microchem Laboratory study report. 2. Data on file. Intertek study report. 3. Versus Clorox Healthcare Bleach Germicidal Wipes  
 4. Per square inch of wipe on average 5. Average price based on Q1 2023 Clarivate Report data  
 6. See Technical Data Bulletin for a complete list of microorganisms 7. Refer to device manufacturer's instructions for use\*.

