

# Sani-HyPerCide® Disinfectant vs. Clorox® Bleach

## Visual Residue Assessment



PDI understands how important aesthetics are in today's healthcare patient experience. Providers and patients demand more than just clean surfaces to prevent healthcare associated infections (HAIs). It's not enough to simply clean and disinfect – surfaces must also look clean.

Many surfaces in the healthcare setting are disinfected by bleach, with some formulations leaving behind a streaky surface or residue. This requires a secondary step of cleaning the residue to leave the surface looking clean. The hydrogen peroxide formulation of **Sani-HyPerCide** disinfectant provides the ability to disinfect against the most harmful pathogens, including *Clostridioides difficile* (*C. diff.*),<sup>1</sup> without leaving behind unsightly residue.

To demonstrate the superior cosmetic performance of **Sani-HyPerCide** disinfectant vs. **Clorox** Bleach, PDI conducted a study to evaluate residue on sample tiles.<sup>2</sup>

## Visual Residue Assessment

**Purpose:** Assess difference in residue remaining on surfaces disinfected with **Clorox** Bleach compared to surfaces disinfected with **Sani-HyPerCide** disinfectant.

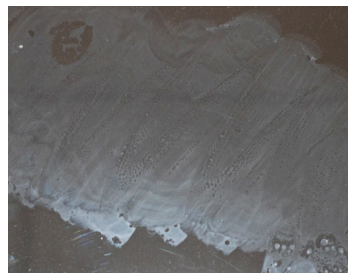
**Method:** Glass and clear Polycarbonate (PC) plates were tacked down to a flat surface and wiped every hour for a four-hour period.

**Results:** The plates were removed and placed in a controlled setting for imaging comparison. Photographs were taken at various angles to provide an accurate depiction of any visible residue remaining on the surfaces post disinfection. Surfaces disinfected with **Clorox** Bleach showed more visible residue on the surface when compared to **Sani-HyPerCide** disinfectant. This is attributed to evaporation and salt formation due to the presence of sodium hypochlorite in the **Clorox** Bleach formulation.

As **Sani-HyPerCide** disinfectant is a hydrogen peroxide formula, it does not undergo the same phenomenon.



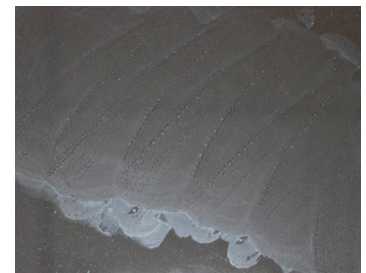
Sani-HyPerCide (Clear Polycarbonate)



Clorox Bleach (Clear Polycarbonate)



Sani-HyPerCide (Glass)

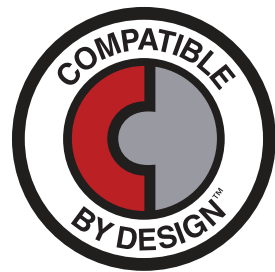


Clorox Bleach (Glass)

**Sani-HyPerCide** disinfectant is a hydrogen peroxide ready to use formula designed to provide powerful protection against HAI causing microorganisms, including *C. diff.*, to help standardize your disinfection protocols without compromising compatibility, or adding unsightly residue.

Power and compatibility in an easy to use formula.

Disinfection without compromise.



REORDER NO. WIPE SIZE WIPE COUNT CASE PACK TI/HI CASE WEIGHT CASE CUBE

**Sani-HyPerCide® Germicidal Disposable Wipe**

	REORDER NO.	WIPE SIZE	WIPE COUNT	CASE PACK	TI/HI	CASE WEIGHT	CASE CUBE
Large Canister	P27372	6 x 6.75"	160	160/can, 12 cans/case	10/3	26.5 lbs	1.430 ft <sup>3</sup>
Extra Large Canister	P26584	7.5 x 15"	65	65/can, 6 cans/case	10/4	15.1 lbs	0.936 ft <sup>3</sup>

Protect your patients, staff and healthcare environment today.

Learn more at [pdihc.com/Sani-HyPerCide](http://pdihc.com/Sani-HyPerCide) or scan here



<sup>1</sup>Formerly known as *Clostridium difficile*.

<sup>2</sup>PDI Study conducted February 2020.

<sup>3</sup>Refer to device manufacturer's instructions for use prior to use.