

# Powerful disinfection made easier.



Get ready for an easier way to help protect your patients, staff and healthcare environment. **Sani-HyPerCide®** disinfectant is a powerful, ready-to-use hydrogen peroxide formula that kills *Clostridioides difficile*<sup>1</sup> and other relevant pathogens, without compromising compatibility.<sup>2</sup>

Disinfection without compromise.



**Sani-HyPerCide®**

**PDI®**  
BE THE DIFFERENCE





## Power and compatibility in an easy to use formula.

Disinfecting with sporicidal formulations can lead to concerns around ease of use, or impact on visual and material compatibility. Some formulations utilize a multi-step process, with mixing or dilution required prior to use. Other formulations require a secondary cleaning step to remove unsightly residue after disinfection. These steps can increase the burden on staff and decrease efficiency.

Disinfection without compromise.







## Powerful H<sub>2</sub>O<sub>2</sub> Disinfectant

- + **Sani-HyPerCide** disinfectant's hydrogen peroxide formula provides a powerful solution to kill a broad spectrum of the most prevalent healthcare pathogens, including *C. diff.*<sup>1</sup>, *C. auris* and Norovirus.
- + Rapid efficacy: 1 minute contact time for all organisms with the ability to address *C. diff.*<sup>1</sup> in 5 minutes.



## Simple, Ready to Use

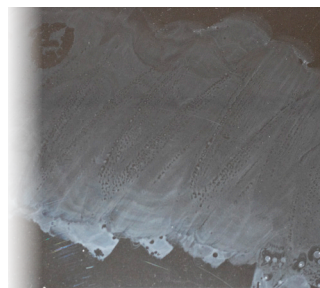
- + **Sani-HyPerCide** disinfectant is simple and convenient to use.
- + Available in ready to use wipe format.
- + No mixing or dilution required for use.

## Compatible by Design™

- + Hydrogen peroxide formula won't stain scrubs.
- + Compatible<sup>2</sup> with surfaces and materials commonly found in the healthcare setting.
- + Bench-top compatibility testing<sup>3</sup> on surfaces and materials found that:
  - **Sani-HyPerCide** disinfectant is more compatible than **Clorox®** Bleach.
  - Offers improved aesthetic compatibility than **Clorox** Bleach.



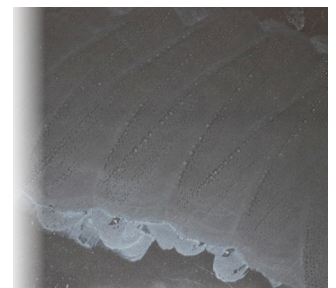
Sani-HyPerCide (Clear Polycarbonate)



Clorox Bleach (Clear Polycarbonate)

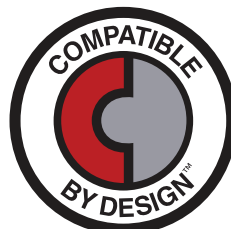


Sani-HyPerCide (Glass)



Clorox Bleach (Glass)

**Sani-HyPerCide** disinfectant also shows improved aesthetics over **Clorox** Bleach, leaving behind less residue so there's no need for a secondary cleaning step.





	REORDER NO.	WIPE SIZE	WIPE COUNT	CASE PACK	TI/HI	CASE WEIGHT	CASE CUBE
<b>Sani-HyperCide® Germicidal Disposable Wipe</b>							
Large Canister	P27372	6 x 6.75"	160	160/can, 12 cans/case	10/3	26.5 lbs	1.430 ft <sup>3</sup>
Extra Large Canister	P26584	7.5 x 15"	65	65/can, 6 cans/case	10/4	15.1 lbs	0.936 ft <sup>3</sup>

Protect your patients, staff and healthcare environment today.

Learn more at [pdihc.com/Sani-HyperCide](https://pdihc.com/Sani-HyperCide) or scan here



<sup>1</sup>Clostridioides difficile spores formerly known as Clostridium difficile spores.  
<sup>2</sup>Refer to device manufacturer's instructions for use.  
<sup>3</sup>Data on file.