



# YOU HAVE THE POWER WITH AROUND THE CLOCK PROTECTION

You can't be everywhere all the time. With the world's first continuously active disinfectant, now, you can be.

Protect your patients and staff with a unique disinfectant that shields against epidemiologically important pathogens\* for up to 24 hours. Just spray and walk away for peace of mind.

**Together...We Got This!**



## Sani-24

Powered By **MICROBAN**



**Sani-24**

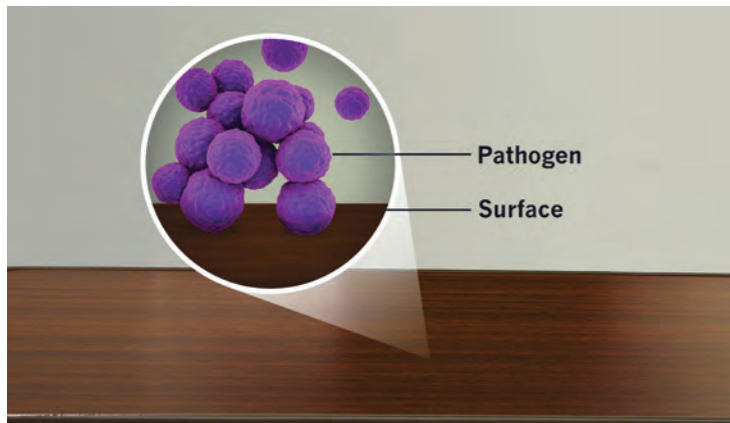
## You Can't Be Everywhere, Nor Can You Disinfect a Surface Each Time it Has Been Touched

- In the healthcare setting, the contaminated surface environment plays a large role in the transmission of pathogens<sup>1</sup>
- The higher the bioburden, the greater the risk of HAIs.<sup>2</sup> The environment serves as a reservoir for microbes that can easily be transmitted to patients, healthcare staff, and visitors<sup>2</sup>
- Disinfection reduces contamination by killing pathogens that lead to HAIs.

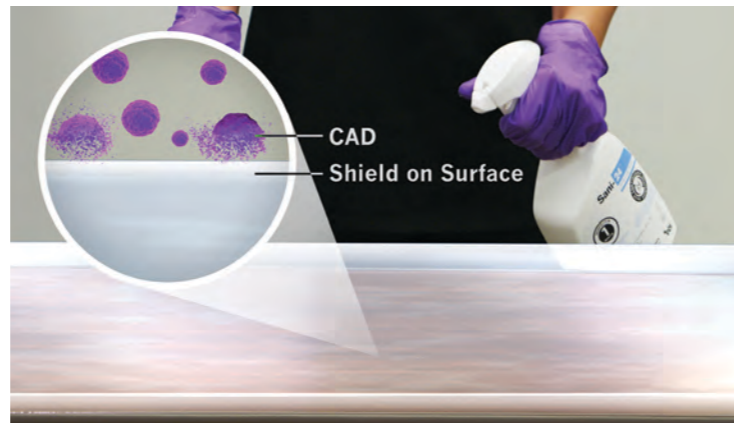


## Sani-24<sup>®</sup> Germicidal Spray Minimizes Transmission of HAI's

Standard Disinfection



Continuously Active Disinfection

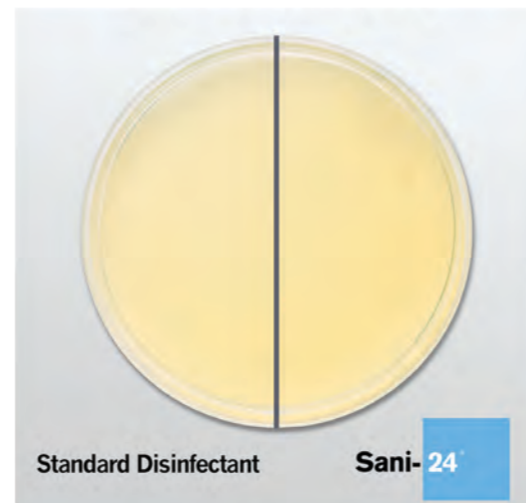


## The World's First Continuously Active Disinfection (CAD)\*

CAD technology provides a shield against key pathogens responsible for up to 40% of HAIs in the healthcare environment:

- *Enterobacter aerogenes*
- *Enterococcus faecalis* VRE (Vancomycin resistant enterococcus)
- *Pseudomonas aeruginosa*
- *Staphylococcus aureus*
- *Staphylococcus aureus* (Methicillin Resistant)

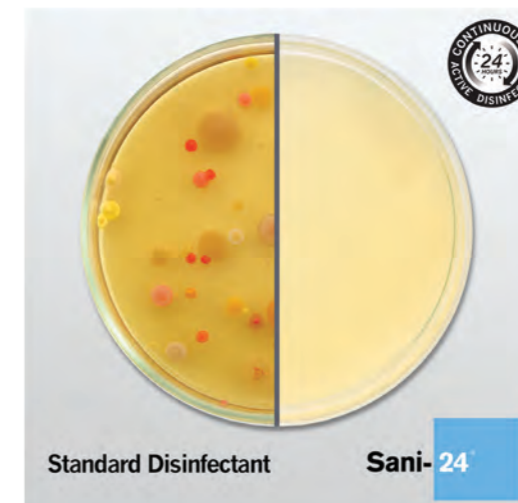
Immediate Disinfection



12hrs Later



24hrs Later



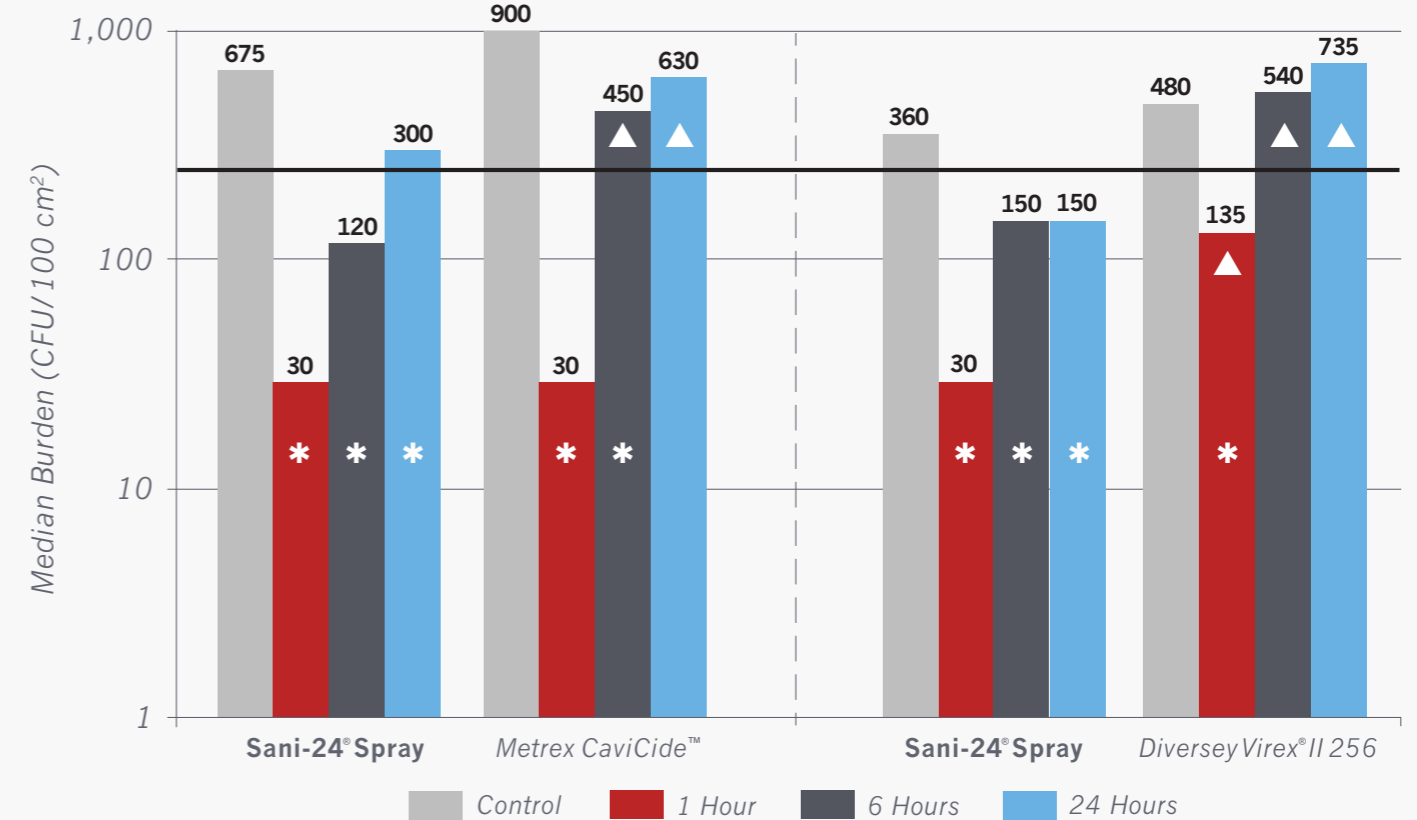
## Simple and Efficient To Use



- Provides 1 minute disinfection for broad spectrum of microorganisms.
- With a 5 minute contact time for CAD, just spray and walk away with peace of mind.
- Bactericidal and virucidal.\*\*
- Soft-Surface Sanitization.
- Quat Alcohol formulation is compatible with a broad range of surfaces and equipment in the healthcare environment.

## YOU HAVE THE POWER. WE HAVE THE PROOF.

M.G. Schmidt et al. / American Journal of Infection Control 00 (2019) 1-3



\* denotes bioburden was significantly lower than its pre-disinfection concentration.  
 ▲ denotes Disinfectant-1 bioburden for the equivalent time point was significantly lower than its concurrent comparator (Disinfectant-2 or Disinfectant-3) for the specific time point.  
 Red line at 250 CFU/cm<sup>2</sup> denotes targeted concentration recommended upon completion of terminal cleaning.

- A clinical study evaluated two standard disinfectants in comparison to **Sani-24<sup>®</sup> Spray** for their ability to limit bioburden on patient beds.
- Two interdependent trials were conducted, one with **Sani-24<sup>®</sup> Spray** and Metrex™ CaviCide™, and a second with **Sani-24<sup>®</sup> Spray** and Diversey's Virex® II 256.
- The time points studied were 1, 6, and 24 hours after application of disinfectants.
- **Sani-24<sup>®</sup> Spray**, which is designed to provide continuously active disinfection, was found to be superior for all time points.



# We Got You Covered with Around-the-Clock Protection

You can't be everywhere, nor can you disinfect a surface each time it has been touched.

Now with **Sani-24®** Germicidal Spray, the world's first Continuously Active Disinfectant (CAD)\*, you have the power to protect your patients, staff, and facility with confidence and control.

**Together...We Got This!**



REORDER NO.      CASE PACK      TI/HI      CASE WEIGHT      CASE CUBE

## Sani-24® Germicidal Spray

	REORDER NO.	CASE PACK	TI/HI	CASE WEIGHT	CASE CUBE
Spray Bottle	X14109	32oz/bottle, 9 bottles/case	13/3	20.00 lbs	1.054

Protect your patients and staff today.  
Speak with your PDI sales representative or visit [pdihc.com/Sani-24](http://pdihc.com/Sani-24).



1. Weber, David J., Kanamori, Hajime, Rutala, William A. 'No touch' technologies for environment decontamination: focus on ultraviolet devices and hydrogen peroxide systems. *Curr Op Infect Dis.* Aug. 2016, pp. 424-431.
2. Schmidt, M. et. al. In situ evaluation of a persistent disinfectant provides continuous decontamination within the clinical environment. *Am J Infect Control* 2019.

\*CAD addresses *Enterobacter aerogenes*, *Enterococcus faecalis* VRE (Vancomycin resistant enterococcus), *Pseudomonas aeruginosa*, *Staphylococcus aureus*, *Staphylococcus aureus* MSRA (Methicillin Resistant).

\*\*Sani-24® Spray is effective against TB with a 3 minute contact time.

Virex® is a registered trademark of Diversey™ Inc.

Cavicide™ is a trademark of Metrex Research, LLC.

Microban® is a registered trademark of Microban International Ltd.

EPA Reg. No.: 42182-9

©2019 PDI 400 Chestnut Ridge Road Woodcliff Lake, NJ 07677  
T: 800-999-6423 W: [pdihc.com](http://pdihc.com) PDI08190816

INTERVENTIONAL CARE      PATIENT CARE      ENVIRONMENT OF CARE

