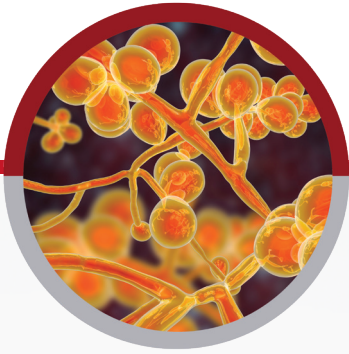


EMERGING PATHOGEN ALERT

Candida auris

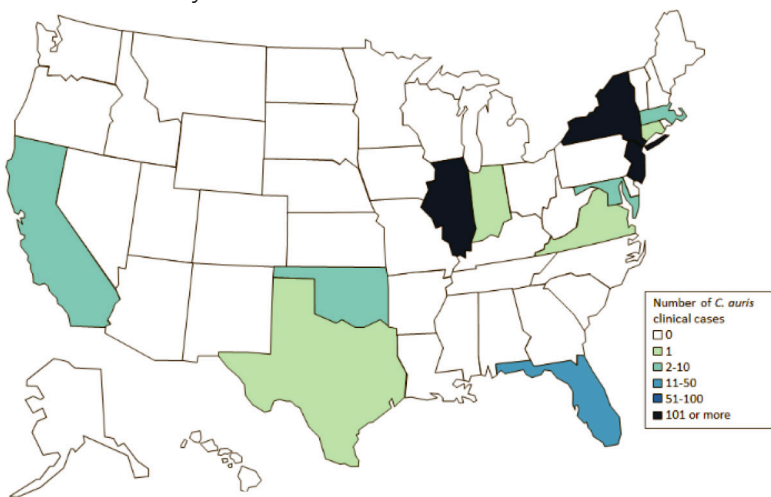


Pathogen Profile^{1,2}

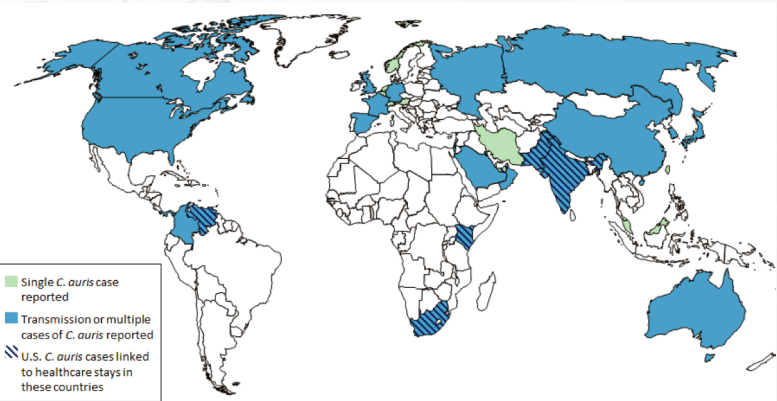
- *Candida auris* is an emerging fungus that presents a serious global health threat.
- Many *C. auris* infections are multi-drug resistant; meaning resistant to multiple antifungal drugs used to treat Candida infections making it more difficult to treat.
- *C. auris* is difficult to identify with standard laboratory methods leading to misidentification and improper management.
- *C. auris* has caused outbreaks in healthcare settings; quick identification is important to implement special precautions to stop its transmission.
- *C. auris* can cause bloodstream and other types of invasive infections, particularly in patients in hospitals and residents in nursing homes who have multiple medical problems. More than 1 in 3 patients die within a month of *C. auris* infection.

Situation³

Clinical cases of *C. auris* reported by U.S. States as of 2.28.19



Clinical cases of *C. auris* reported by countries as of 2.28.19



Routes of Transmission^{1,2}

- *C. auris* can spread from one person to another in hospitals and nursing homes.
- People can carry *C. auris* somewhere on their body, even if it is not making them sick.
- Persons colonized with *C. auris* may contaminate other people, objects, or surfaces allowing the fungus to spread.

Precautions and Infection Control³

Prepare for *C. auris* in healthcare:

- Ensure the laboratory can identify *C. auris*; if not, send suspected isolates to the state or local public health for further identification.
- Establish a surveillance protocol with laboratory for prompt notification when *C. auris* is suspected.

Precautions and Infection Control³ (cont.)

Prepare for *C. auris* in healthcare:

- Identify persons at higher risk for *C. auris*. These include:
 - People who have received healthcare in post-acute care facilities (e.g., nursing homes), especially those with ventilator units.
 - People with a recent history of receiving healthcare outside the United States in a country with known *C. auris* transmission.
- Educate on recommendations for infection prevention and control of *C. auris* with healthcare staff, including environmental services.

What to do when *C. auris* is in your facility:

- Check the CDC website for the most up-to-date guidance on identifying and managing *C. auris*.
- Report possible or confirmed *C. auris* immediately to your public health department.
- Ensure adherence to CDC recommendations for infection control, including:
 - Place patients infected or colonized with *C. auris* in a single room on contact precautions.
 - Assess and ensure gown and glove use.
 - Reinforce hand hygiene protocols.
 - Coordinate with environmental services to ensure the environment is cleaned with a disinfectant that is effective against *C. auris* (i.e., those effective against *Clostridioides difficile*) by searching EPA List K and monitor the cleaning/disinfection process.
 - If disinfectant products on List K are not available for use, see alternative products mentioned at CDC website: <https://www.cdc.gov/fungal/candida-auris/c-auris-infection-control.html#disinfection>
- Screen contacts of case individuals to identify others that may be colonized.
- Clearly communicate the person's *C. auris* status to receiving healthcare providers upon discharge/transfer.



SUGGESTED PDI PRODUCTS

Sani-Cloth® Bleach
GERMICIDAL DISPOSABLE WIPE



Sani-Cloth® Bleach is on EPA List K recommended for cleaning and disinfection of environmental surfaces exposed to persons infected/colonized with *C. auris*.

	REORDER NO.	WIPE SIZE	CASE PACK	CASE WGT	CASE CUBE	PALLET TI/HI
Sani-Cloth® Bleach Germicidal Disposable Wipe						
Large Canister	P54072	6" X 10.5"	12/75's	22.65 lbs	1.54 ft	10/3
Extra Large Canister	P25784	7.5" X 15"	6/65's	20.50 lbs	1.01 ft	10/4
Large Individual Packets	H58195	5" X 7"	10/40's	8.10 lbs	0.51 ft	19/5
Extra Large Individual Packets	U26595	11.5" X 11.75"	3/40's	8.20 lbs	0.50 ft	24/3
Pail	P7007P	7.5" X 15"	2/160's	16.50 lbs	0.95 ft	10/5
Refill (for Pail)	P700RF	7.5" X 15"	2/160's	15.20 lbs	0.53 ft	18/3

References:

¹<https://www.cdc.gov/fungal/candida-auris/index.html>

²https://www.cdc.gov/fungal/diseases/candidiasis/pdf/Candida_auris_508.pdf

³<https://www.cdc.gov/fungal/candida-auris/tracking-c-auris.html>