

# The truth behind the formulation.

In the fight against infections, material and equipment compatibility is critical. While the active ingredients in hydrogen peroxide formulations break down to water and oxygen, their inactive ingredients play a role in overall compatibility.

## What lies beneath:

### Hydrogen Peroxide (H<sub>2</sub>O<sub>2</sub>) Formulations

- + Contain less than 1.5% H<sub>2</sub>O<sub>2</sub>.
- + Have inactive ingredients known to cause material degradation.

<1.5% active H<sub>2</sub>O<sub>2</sub>

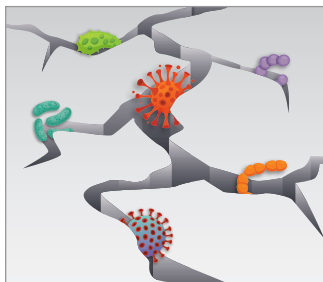
### Super Sani-Cloth® Germicidal Disposable Wipe

- + Contains 55.5% active ingredients (combination of quat and alcohol).
- + Compatible by design, inactive ingredients are chosen to minimize material degradation.

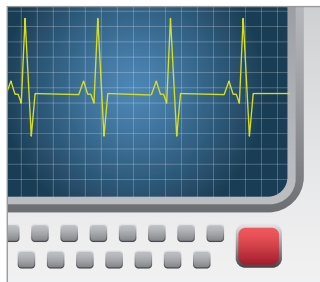
55.5% active  
Quat/Alcohol



## Choosing the wrong formulation may lead to:



**Damaged Sites  
Harboring Bacteria**



**Reduced Lifespan  
of Equipment**



**Lower Patient  
Satisfaction**



**Increased Cost  
Burden**

## Why pH matters:

Hydrogen Peroxide products tend to be more acidic and corrosive to metals. The Super Sani-Cloth Germicidal Disposable Wipe formula is compatible with a wide range of medical devices and surfaces<sup>2</sup> within your facility. Its neutral pH is gentle on most surfaces.



# Super Sani-Cloth® Germicidal Disposable Wipe



## Compatible

- + Does not require personal protective equipment (PPE)<sup>1</sup>.
- + Compatible with commonly used materials<sup>2</sup>.
- + Listed on over 560 medical device IFU's.<sup>3</sup>

## Power to protect

- + Bactericidal, tuberculocidal, fungicidal and virucidal.
- + Included on EPA's List P for products effective against *C. auris*.

## Efficient disinfection and cleaning

- + 2 minute intermediate level disinfectant.
- + Effective against 32 microorganisms.
- + Effective against TB in 1 minute<sup>4</sup>; Clorox Healthcare® Hydrogen Peroxide Cleaner Disinfectant Wipe Kills TB in 5 minutes.



Super Sani-Cloth® Germicidal Disposable Wipe	REORDER NO.	WIPE SIZE	CASE PACK	CASE WGT	CASE CUBE	PALLET TI/HI
<b>Softpack</b>	A22480	8.2" X 9.8"	80/pack, 9 packs/case	16.58 lbs	0.948 ft	10/4
<b>Large Canister</b>	Q55172	6" X 6.75"	160/can, 12 cans/case	26.04 lbs	1.430 ft	10/3
<b>Extra Large Canister</b>	P86984	7.5" X 15"	75/can, 6 cans/case	15.56 lbs	0.936 ft	10/4
<b>Large Individual Packets</b>	H04082	5" X 8"	50/box, 10 boxes/case	8.03 lbs	0.539 ft	20/4
<b>Extra Large Packets</b>	U87295	11.5" X 11.75"	50/box, 3 boxes/case	7.19 lbs	0.500 ft	24/3

Other formulations available. Visit [pdihc.com](http://pdihc.com) for more info.

¥ Kills SARS-CoV-2 (Coronavirus), the virus that causes COVID-19, on hard, nonporous surfaces.

<sup>1</sup> See instructions for use on PDI product label.

<sup>2</sup> Please check your device manufacturer's cleaning instructions.

<sup>3</sup> Refer to device manufacturer's instructions for use, data on file

<sup>4</sup> See Technical Data Bulletin.

<sup>5</sup> Market leadership claims based on Q3 2022 Clarivate Data

Clorox Healthcare® is a registered trademark of The Clorox Company.

©2023 PDI 400 Chestnut Ridge Road Woodcliff Lake, NJ T: 800.999.6423 W: [pdihc.com](http://pdihc.com) | PDI04238601

